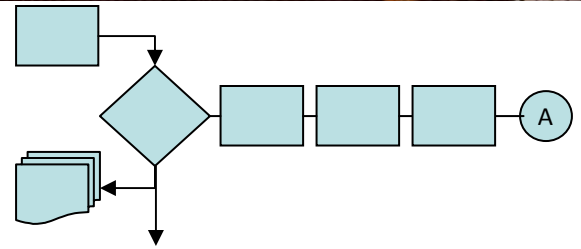




New Premises Confirmed!

The DBCC Board signed off on a 3 year lease plus an option for another 2 years to secure new premises for the DBCC Co-location Team. The address for the new premises is:

Level 1, Morevale Building Cnr Transport Avenue and Central Park Street, Paget.



Operational Planning: Processes and Procedures Update

The project team held a workshop with Senior Managers and Subject Matter Experts **Mark Nugter & Keiren Lowth** (QR National), **Steve Harris & Russell Patterson** (QR Network), **Kel Lockyer & Alex Josephsen** (DBCT) and **Rod Fischer** (PN) to design and define how operational planning would work in the future.

The workshop participants were fortunate to be able to use the Boardroom at the new DBCC Premises at Paget.

The goal of the workshop was to gain agreement on one process taking into account requirements from each Service Provider and Producers

The workshop was very productive ensuring that the best parts of the current processes were kept and improvements and modifications focused on a better way of working together.

The processes are currently being signed off and the detail sort through, as soon as these have been finalised you will be notified of the key changes.

The project team conducted a detailed evaluation of all available premises across Mackay. The Morevale Building won the evaluation hands down with its modern, high quality fit out, both secure and off street car parking, and high grade technology and communications fit out. The building is 18 months old and we were fortunate with our timing that it was available.

The office floor space is approximately 810sq meters which is too big for the estimated size required for the coal centre. Therefore part of the building will be sub-tenanted by other participants in the coal chain. We are currently in the process of finalising these arrangements. The sub-tenants that have been confirmed are Pacific National and QR Network Planning.

The tenants and the DBCC will share some common facilities including the Boardroom, Reception, Kitchen and Café and staff amenities.

The project team are now working to make some modifications to the internal layout. A workshop is currently being scheduled with all tenants to finalise the floor plan.



Morevale Building – Cnr Transport Avenue and Central Park Street, Paget



Our query email box has changed.... If you have any questions or would like to know more information please feel free to drop us an email at project@dbcc.com.au