

DBCC Co-Location Project

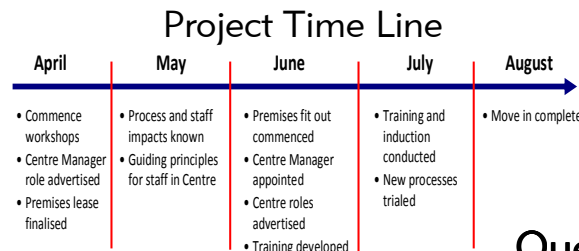


WHAT IS DBCC?

You may have heard the acronym DBCC, it stands for Dalrymple Bay Coal Chain and refers to the supply chain from mine load outs to the Dalrymple Bay Coal Terminal ship hold.

The DBCC Co-Location Project is focused on improving the communication and planning functions of this coal chain. This will entail integrated planning and achieving the goal of improving the predictability and throughput of the supply chain. That is to enhance our planning and to do it from the basis of shared whole of system understanding.

The DBCC supply chain encompasses 21 mines, 19 load points, 1 terminal, 2 rail operators, 1 rail network. Planning and organising the supply chain to improve efficiency is in everyone's best interest with all participants benefiting when more coal flows through the chain.



We plan to provide regular communications about the project to you. If you have questions or would like to know more information please feel free to drop us an email at admin@dbcc.com.au. The project is in the early stages and we may not be able to give you all the answers, however as decisions are made we will update you as soon as we are able. Below are answers to some questions that we have received:

How do we know that co-location will provide benefits?

There are many coal chain logistic centres both in Australia and globally. We are not the first coal chain to review our processes from the total coal chain point of view. In each case the Project Team has investigated, efficiency benefits have been gained and attributed to co-locating and co-ordinating the activities of the coal chain.

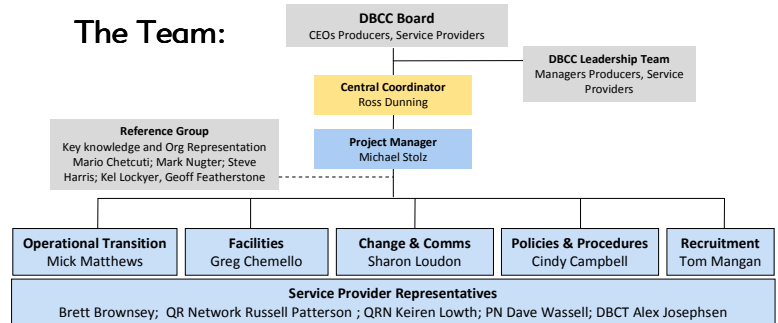
When will the new centre be up and running?

There are still a number of areas that need to be resolved before we can determine a firm date on the centre being opened. We are currently negotiating a lease on premises, this has not been signed as yet. At this stage the Centre is scheduled to be operational by August 2009.

Who and what positions will be in the centre?

This is an area that has not been finalised. Workshops are planned for early April to detail the processes that will be in the Centre – from this we will know the type of positions required and how many. This is a “hot” topic and you will be informed as soon as this has been finalised.

The Team:



Approval was given for the commencement of the Co-location Project on the 30th of January 2009.

Since then the project has been planning, scoping and preparing for implementation.

The project team encompasses a number of people from all coal chain participants. You can see from the project chart who your representatives are.

The project will be sending out regular updates to keep you informed of progress as decisions are made. In the meantime if you have any questions that you would like to ask the project team our email address is admin@dbcc.com.au so drop us a line!

Questions??

Who is the Sponsor of the project?

The DBCC Board, comprising membership of all coal chain participants, has been established to oversee the Project. On Friday 20th March the DBCC board confirmed the budget for the DBCC Co-location project until 2010. This specifically includes DBCC Forecasting; Master Planning and Long Term Solution.

Who will be in charge of the centre and who will the people in the centre be reporting to?

The “Centre Manager” will be in charge of the centre and facilitate the agreed integrated planning approach. This position is currently being recruited. People who relocate to the centre may have a requirement to have a dual reporting functionality to their current Manager and to the Centre Manager (dotted line). More information will be known as we progress through the process workshops of the project.

Will anyone lose their jobs?

On the contrary, new jobs will be created to support the integrated master planning and supply chain reporting and management of the Centre.