



DBCT

BBI (DBCT) MANAGEMENT PTY LTD



PROJECT

# COMMUNITY REPORT

“BUILDING THE FUTURE TOGETHER”

## Expansion reaches major milestone

Welcome to the third edition of the BBI (DBCT) Management Community Report for the DBCT 7X Expansion project.

This regular community report is an important way of keeping you informed on the project. It provides information on:

- Activities over the past nine months
- Key activities planned for the next six months
- Our community interaction.

The DBCT 7X Project Team is pleased to report Phase 1 of the 7X Expansion Project was completed in early March 08.

Group Project Director, Mr Eric Kolatchew said this tremendous achievement was the culmination of many years of intense design and construction effort.

“The additional capacity now available will benefit both BBI and our coal company customers,” Mr Kolatchew said.



Minister for Tourism, Regional Development & Industry, Hon. Desley Boyle with Group Project Director Eric Kolatchew.

He also paid tribute to all suppliers, contractors and consultants for their efforts in achieving the Phase 1 completion, and in particular, the BBI (DBCT) Site Management Team.

“The DBCT 7X Project Team is also grateful for the support of the community to date, and will continue to keep you informed and answer your questions for the remainder of the project.”

The BBI (DBCT) Site Management Team, who are introduced to readers on page 3.

## Growing with Central Queensland

Coal from Central Queensland’s Bowen Basin continues to be one of the most sought after commodities in the world. Today, the demand for our premium coal is greater than it has ever been, creating opportunities for growth in all elements of the coal supply chain.

At DBCT, we are responding to this demand by increasing the terminal’s capacity from 59 Mtpa to 85 Mtpa. This expansion will support the export of Central Queensland coal and provide many economic benefits for the state of Queensland, regional organisations and local communities.

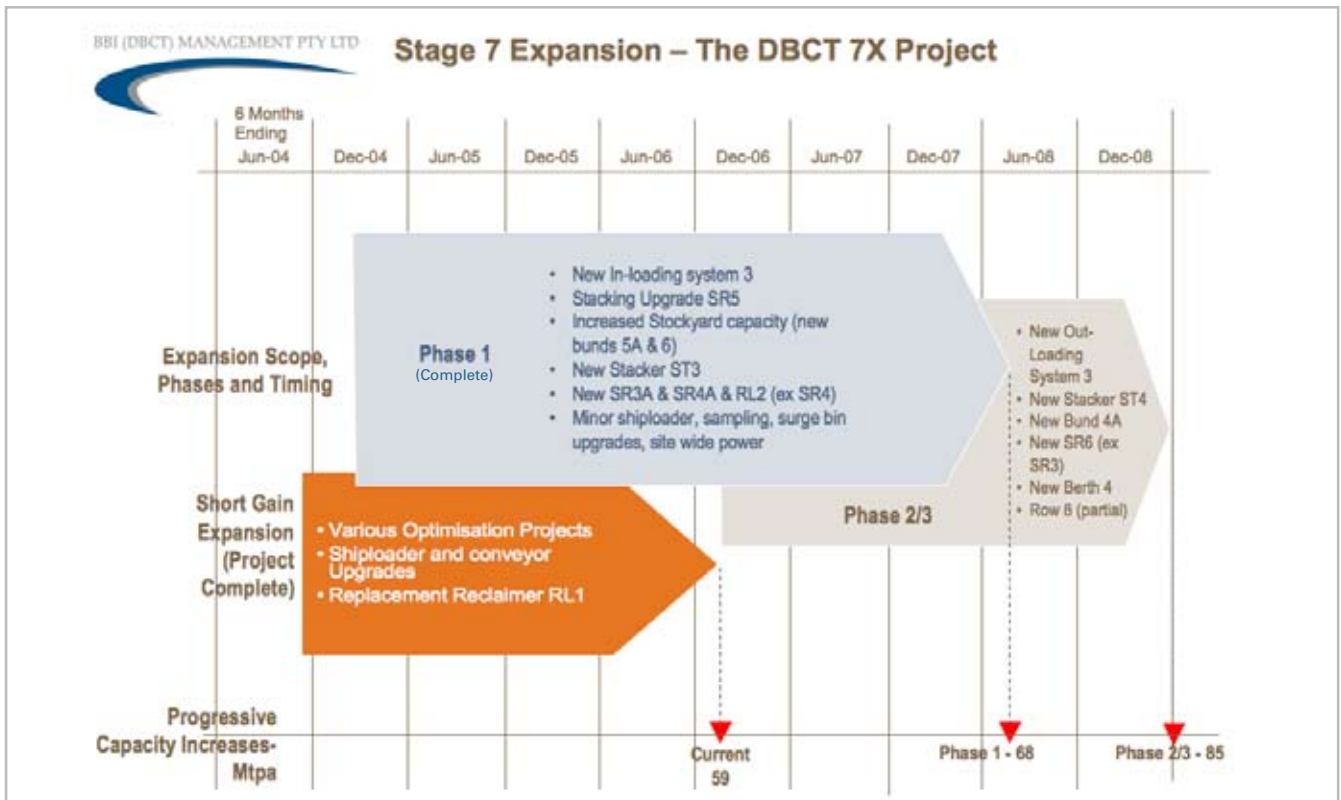
Our aim is to complete the remainder of the project with as little impact on the neighbouring communities and the environment as possible, and we have detailed plans to do this. Working with you to understand your concerns is vital to achieving this aim. If you have any questions on the expansion please contact Frank Ross, our Project Liaison Manager. Frank’s contact details are on the back of this report.

## 7X Expansion Fast Facts

We are serious about keeping expansion impacts to an absolute minimum, and supporting the community. The following table provides a regular update on our social, environmental, and economic performance to help you monitor how we are doing.

	JULY 2007	MARCH 2008
Current contractor workforce	566	798
% of contractors’ workforce from Mackay region	Approximately 75%	Approximately 75%
Capital expenditure to December 2006	\$472 million	Approximately \$700 million
% of expenditure in Mackay region	Approximately 15%	Approximately 15%
Community donations/ sponsorships	BBI donation to annual swimming program at Alligator Creek Primary School	BBI donations: • computer equipment to local and regional schools with John Holland • Pioneer Maritime Club • Annual donation to the swimming program at Alligator Creek Primary School  BBI sponsorships: • Sarina Arts Council • Qld Police Citizens Youth Club
Lost time injuries	One. The project recorded its first lost time injury in June, after accumulating over 1.4 million hours without injury. A high level of safety and world class performance continues	To date, the total project hours worked is 3.36 million hours with only two lost time injuries recorded. A high level of safety and world class performance continues
Number of breaches of DA conditions	0	0
Number of community meetings and presentations	Four community meetings and five presentations	Eight community meetings and presentations

## Stage 7 Expansion – The DBCT 7X Project



### Activity summary - July 2007 – March 2008

#### Phase 1

Phase 1 is now complete. Key activities have included:

- Development of a complete new third inloading system, including a rail loop, dump station and third inloading conveyor
- Stockpile upgrades and two new stockpile bunds: Bund 5A and Bund 6
- Three new yard machines
- Relocation of a stacker/reclaimer to bund 6 and conversion as a reclaimer.

#### Phase 2/3

Work on Phase 2/3 began in earnest in December 2006. This phase is currently at approximately 50% complete, and targeting completion in December 2008. The initial works of Phase 2/3 have included:

- Reclamation works for the new (3rd) surge bin. This work is complete
- New 3rd outloading system
- Yard machines
- New berth 4 and jetty widening: the pile driving project is approaching 50% completion.

#### Safety

Workplace health and safety is a priority for the 7X Expansion team, and as of the end of February 2008, we have reached a total of 3.36 million hours with only two lost time injuries recorded. With a significant increase in the number of contractors on site, we will continue to be vigilant in protecting the safety of everyone involved in the project.

#### Key planned activities – next six months

Work on Phase 2/3 will continue. Dust and noise suppression will continue to be a priority for the management and contractors involved in this work.

- New 3rd outloading system: Work will continue on the new outloading conveyors on the northern end of the stockyard and the remaining stockyard machines. Work is progressing also on the construction of the new surge bin.
- New 4th berth and jetty widening: Pile driving for the new 4th berth and jetty widening commenced in July 2007, and as reported in the Community Report #1, this work is scheduled to continue into the last quarter of 2008. The works are subject to strict environmental conditions outlined by the EPA and if

you would like further information on these conditions, please contact Frank Ross.

As advised in previous community bulletins, the pile driving works will continue between the hours of 6am and 6:30pm, Monday to Saturday. However, noise will reduce as the jetty work moves further offshore. There may, however, be times when pile driving needs to continue after 6:30pm in order to finish an already-started pile, as piles cannot be left partially driven. The team will ensure late completion of pile driving is kept to an absolute minimum.

Some blasting may also be needed to prepare the sea bed for piling, but this is a last resort and alternatives are being assessed. We will keep you informed of progress.

- Other: The community will continue to be notified of police escorted long-wide loads of machinery components to the terminal via Community Bulletins prior to the transportation.

On page 4, we present photographs which show the completed facilities for Phase 1 and the progress of works in Phase 2/3.

## BBI (DBCT) Public Information Sessions - 27th October 2007

BBI (DBCT) Management held the third of its annual public information sessions in October 2007. These sessions are a valuable way for us to get community feedback on the expansion, and we thank you for your continued interest and involvement.

The table opposite outlines only the questions you raised at the sessions in relation to the 7X Expansion Project, together with our response. Questions raised where the responsibility rests with another stakeholder / third party, have been referred on to these stakeholders.

Question	Response
Is the new inloading no. 3 elevated conveyor going to be enclosed on the southern side to reduce dust emissions?	This issue was raised at a previous public information session and has been included in the design and construction of this conveyor
Some attendees at the session did not think the current and future enhancements to the tug harbour car park will be effective and they suggested a new pontoon at the bottom of the boat ramp would be more effective	BBI re-stated that the current and future enhancements to the tug harbour car park area had been adopted as a result of public concerns/recommendations. BBI suggested that the community should provide BBI with any viable alternative recommendations for consideration subject to cost and timing. It is important to implement an enhancement that is universally regarded as preferred by the community
Is the DBCT 7X project website being updated regularly?	The website is updated as required, dependant on major construction activity completion, but generally each month

### Keeping you informed

BBI is keeping the community informed of 7X Expansion project progress through a wide range of proactive communication activities, including:

- Full time Project Liaison Manager, Frank Ross (see contact details below)
- Shop front, staffed four days per week, at the PCQ Port Administration Building, Horyu Maru Drive
- Six monthly Community Report
- Annual community information sessions. The next sessions are planned for later in 2007
- Participation in community working groups
- Community bulletins to alert residents of significant new construction events
- Website: <http://www.dbctexpansion.com.au>

Your feedback is always welcomed and encouraged. If you have any queries or would like further details about the project, contact:

Info line: 1300 369 746

Office: 4956 3743 Mobile: 0419 995 636

Email: [frank.ross@bbidbct.com.au](mailto:frank.ross@bbidbct.com.au)

### BBI (DBCT) Management Pty Ltd Project Site Team



(l to r): Col Darling, Doug Mitchell, Peter Wotherspoon, Simon Foster, Andrew Mecoles, Mike Tappenden and Lyn Jenkins.

# Phase 1



New 3rd train unloading station



Portion of the new 3rd inloading conveyor



New stacker reclaimer SR4A

# Phase 2/3



Surge bin 3 being erected



New jetty extension



Berth 4 activity