



## Dalrymple Bay Coal Terminal Performance Indicators

Jul 2009 to Sep 2009

### System Delivery

No of Trains Delivered to the Terminal

	Units	July	August	September	YEJ 10
Actual	trains	569	504	536	1609
Scheduled	trains	629	575	611	1815

No of Tonnes to be Delivered to the Terminal

Actual	tonnes	5,519,358	4,943,131	5,208,471	15,670,960
Scheduled	tonnes	6,164,200	5,635,000	5,987,800	17,787,000

### Inloading Performance

Combined Avg Terminal Unload Time

hours	2.55	2.48	2.43	2.49
-------	------	------	------	------

Combined Avg Train Unload Time

hours	2.17	2.09	2.07	2.11
-------	------	------	------	------

### Yard Performance

Average Stock Build Time / Parcel

hours	2.3	1.9	2.6	2.3
-------	-----	-----	-----	-----

Average Stock Residence Time / Parcel

hours	2.4	1.7	1.7	1.9
-------	-----	-----	-----	-----

### Outloading 1 Performance - L5

Utilisation

hours	73.8%	82.5%	77.3%	77.5%
-------	-------	-------	-------	-------

Average Outloading Rate

hours	3379	3947	4238	3848
-------	------	------	------	------

### Outloading 2 Performance - L6

Utilisation

hours	91.5%	77.0%	62.5%	77.8%
-------	-------	-------	-------	-------

Average Outloading Rate

hours	3909	3304	3316	3609
-------	------	------	------	------

### Outloading 3 Performance - L15

Utilisation

hours	71.1%	68.2%	94.1%	77.9%
-------	-------	-------	-------	-------

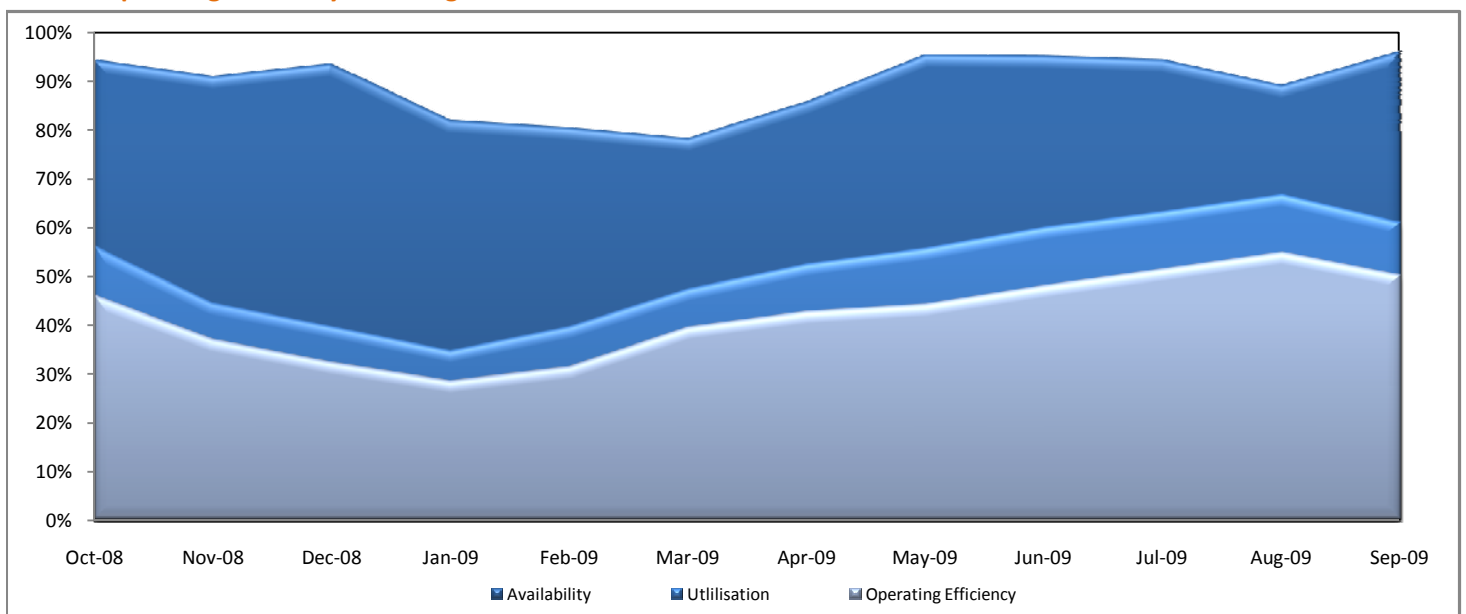
Average Outloading Rate

hours	2738	2421	3595	3079
-------	------	------	------	------

### Average Outloading Rates

Handy	tph	2345	2322	2993	2582
Panamax	tph	3398	3284	3338	3349
Japmax	tph	3394	3521	3701	3501
Cape	tph	3721	3948	4282	4000

### Operating Efficiency Inloading



## Dalrymple Bay Coal Terminal Performance Indicators

Jul 2009 to Sep 2009

### Vessel Performance

#### Number of Vessels

Units July August September YEJ 10

#### Vessel Mix

	Units	July	August	September	YEJ 10
Handy	Ships	6	9	10	25
Panamax	Ships	42	25	29	96
Japmax	Ships	17	10	9	36
Cape	Ships	12	11	13	36

#### Number of Parcels Per Vessel

	Units	July	August	September	YEJ 10
Handy	parcels/vessel	1.0	1.0	1.2	1.1
Panamax	parcels/vessel	1.2	1.5	1.3	1.3
Japmax	parcels/vessel	1.2	1.3	1.3	1.3
Cape	parcels/vessel	2.9	3.0	2.8	2.9

#### Vessel Mix

	Units	July	August	September	YEJ 10
Handy	%	5.3%	10.5%	9.4%	8.1%
Panamax	%	44.7%	36.5%	40.1%	40.9%
Japmax	%	21.5%	16.7%	11.9%	17.0%
Cape	%	28.4%	36.3%	38.5%	34.0%

#### Total Tonnes

	Units	July	August	September	YEJ 10
	t	6,017,266	4,610,132	5,306,151	15,933,549

#### Vessel Queuing

	Units	July	August	September	YEJ 10
Average Daily Total Vessels in Queue	Vessels	43.4	39.1	52.7	45.1
Average Daily Number of Dead Ships	Vessels	0.0	0.0	0.0	0.0
Average Days at Anchor	days	19.3	20.8	23.2	20.9

#### Operating Efficiency Outloading

