

Dalrymple Bay Coal Terminal Performance Indicators

Apr 2011 to Jun 2011

System Delivery

No of Trains Delivered to the Terminal

	Units	April	May	June	YEJ 11
Actual	trains	428	449	472	5616
Scheduled	trains	460	464	476	6364

No of Tonnes to be Delivered to the Terminal

Actual	tonnes	4,244,895	4,472,238	4,659,751	54,879,951
Scheduled	tonnes	4,508,000	4,547,200	4,664,800	62,367,200

Inloading Performance

Combined Avg Terminal Unload Time

hrs:min 2:24 2:31 1:59 2:20

Combined Avg Train Unload Time

hrs:min 1:58 2:04 2:02 2:01

Yard Performance

Average Stock Build Time / Parcel

days 3.6 3.6 3.6 3.1

Average Stock Residence Time / Parcel

days 1.0 1.0 1.0 1.9

Outloading 1 Performance - L5

Utilisation

% 51.5% 71.4% 49.7% 50.8%

Average Outloading Rate

tph 4158 3905 4074 4237

Outloading 2 Performance - L6

Utilisation

% 66.1% 63.0% 53.5% 57.8%

Average Outloading Rate

tph 4368 4827 3865 4367

Outloading 3 Performance - L15

Utilisation

% 81.9% 33.7% 61.9% 63.2%

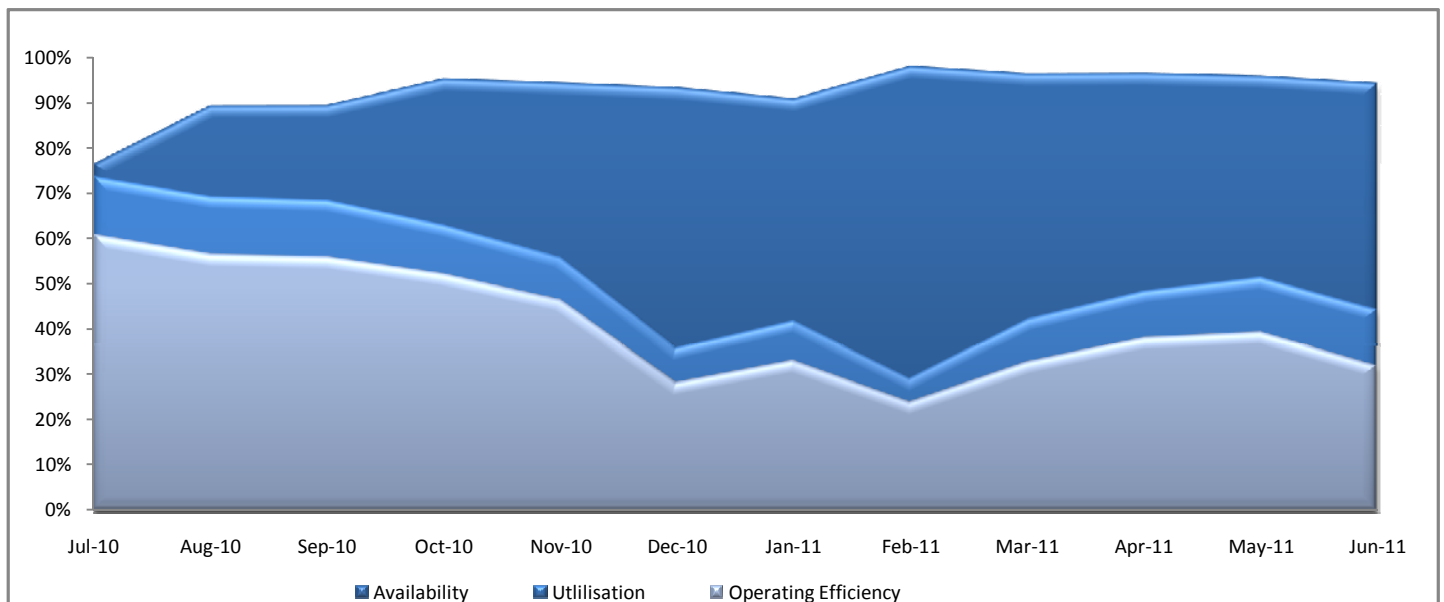
Average Outloading Rate

tph 4542 4346 4441 4613

Average Outloading Rates

Handy	tph	3828	3616	2497	3225
Panamax	tph	4450	3082	4104	4056
Japmax	tph	4678	4368	4285	4364
Cape	tph	4578	4612	4423	4475

Operating Efficiency Inloading



Dalrymple Bay Coal Terminal Performance Indicators

Apr 2011 to Jun 2011

Vessel Performance

Number of Vessels

Units April May June YEJ 11

Vessel Mix

	Units	April	May	June	YEJ 11
Handy	Ships	2	5	4	54
Panamax	Ships	13	9	11	136
Japmax	Ships	14	13	10	132
Cape	Ships	15	17	18	216

Number of Parcels Per Vessel

	Units	April	May	June	YEJ 11
Handy	parcels/vessel	1.0	1.2	1.0	1.1
Panamax	parcels/vessel	1.1	1.0	1.1	1.2
Japmax	parcels/vessel	1.4	1.2	1.0	1.3
Cape	parcels/vessel	2.9	2.7	3.1	2.9

Vessel Mix

	Units	April	May	June	YEJ 11
Handy	%	2.2%	5.6%	4.2%	4.6%
Panamax	%	20.4%	13.3%	16.3%	16.8%
Japmax	%	24.8%	24.1%	16.4%	19.4%
Cape	%	52.5%	57.0%	63.0%	59.3%

Total Tonnes

	April	May	June	YEJ 11
t	4,586,320	4,336,489	4,608,979	54,969,325

Vessel Queuing

	Units	April	May	June	YEJ 11
Average Daily Total Vessels in Queue	Vessels	20.2	18.1	15.7	33.5
Average Daily Vessels with Unavailable Cargo	Vessels	15.9	14.6	10.7	24.3
Average Days at Anchor	days	23.3	13.0	12.4	24.6

** Unavailable Cargo: Any vessel in the queue that does not have all parcels/products available at the mine/s.

Operating Efficiency Outloading

